

Double-Balloon Enteroscope

EN-580T

Therapeutic type



Improved Double-Balloon Endoscope System

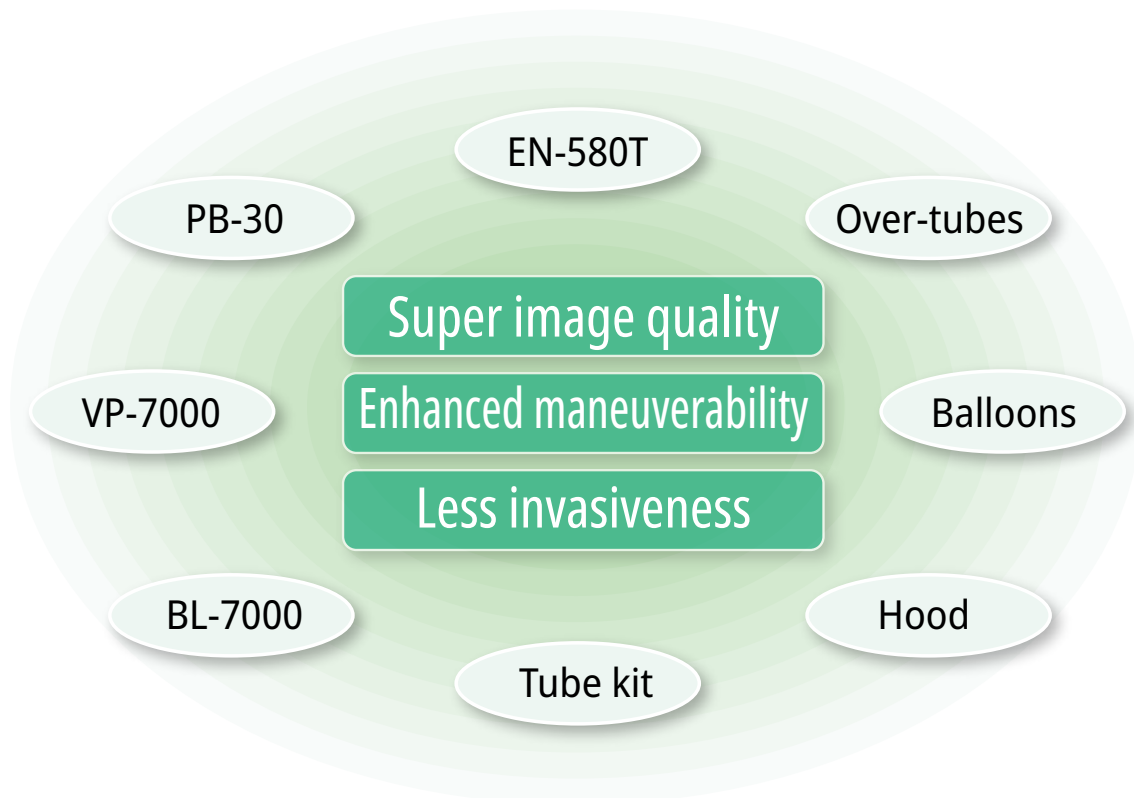
Double-Balloon Endoscopy is a revolutionary technique that allowed the whole length of the small intestine to be visualized, and opened doors to new therapeutic interventions. Fujifilm is proud to introduce the new product line-up of the DBE system developed to meet the clinical needs for more precise and efficient diagnoses and treatment.



Visualization of oral insertion (small intestine)



Visualization of anal insertion (small intestine)





Better visibility for detection and diagnosis

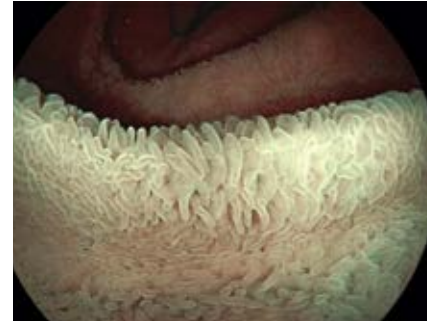
FICE can maximize color differences such as vascular and mucosal patterns without the need for tissue staining. The procedure digitally selects three wavelengths of the light and displays the reconstructed images.



White light image



White light image

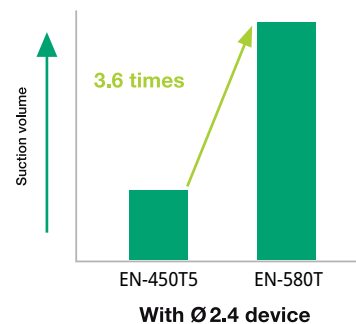


FICE image



Working channel with 3.2mm diameter

The enlarged 3.2mm working channel suits procedures such as hemostasis and balloon dilation. It enables blood or mucus to be aspirated while a therapeutic device is inserted, making hemostasis quicker. The large working channel is also designed for easier insertion and removal of a balloon catheter before and after dilation of stricture.



The 3.2mm working channel provides greater suction performance than conventional models. (According to Fujifilm data)

On-touch connector and relocated balloon air feed inlet for better operability

The balloon air feed inlet has been relocated from the control portion to the connector portion, creating a better examination environment. Also, a one-touch connector especially designed for the balloon air feed inlet on the endoscope is provided, making the preparation simpler.



Endoscope

EN-580T

Therapeutic type



Specification	
Field of view	140°
Observation range	2 ~ 100 mm
Distal end diameter	9.4 mm
Flexible portion diameter	9.3 mm
Bending capability	Up 180° / Down 180° Right 160° / Left 160°
Working length	2,000 mm
Total length	2,300 mm
Minimum instrument channel diameter	3.2 mm

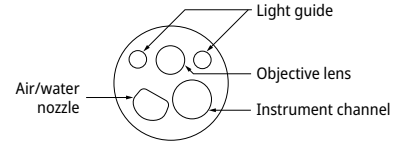
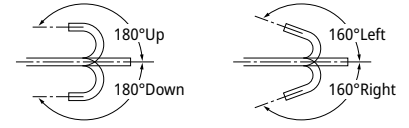


Image area & instrument entry position

Product name: Video Endoscope
GMDN: 36299
Generic name: Flexible video enteroscope

Peripherals and Accessories

PB-30 Balloon controller

To be used to control the pressures inside the balloons.
Balloons are inflated and deflated during DBE examinations.

Power	AC100 to 240V 50/60Hz 0.8A
Maximum flow rate of pump	170ml±50ml / 10sec
Dimensions	145(W)×170(H)×410(D)mm
Weight	7kg (Main unit), 0.4kg (Remote switch)

Product name: Balloon controller
GMDN: 46662
Generic name: Catheter-balloon inflator, reusable



TS-13140 | BS-2

Over-tube

Balloon

The exclusively developed natural rubber balloon and over-tube ensure stable positioning of the endoscope inside the small intestine.



TS-13140
Product name: Over tube
GMDN: 46687
Generic name: Endotherapy overtube, single-use

BS-2
Product name: Endoscopic accessory
GMDN: 45712
Generic name: Gastrointestinal balloon catheter

Model name	Over-tube	Balloon
Material of balloon	TS-13140	BS-2
Dimensions	Natural rubber	
	Outer diameter 13.2 mm Total length 1,450 mm	Outer diameter 35 mm
Compatible enteroscopes	EN-580T	

TY-06

Tube kit

A set of silicone rubber tubes; one to connect the balloon controller to the endoscope (500 series) and one to connect the balloon controller to the natural rubber over-tube.



ST-05B

Balloon setting tool

To be used to attach balloons onto the endoscope.



ST-10

Fixing rubber setting tool

To be used to attach the fixing rubber to the balloon.

